

Using the SIS Web Tool

Table of Contents

Using the SIS Web Tool.....	1
Table of Contents	1
Introduction.....	2
Web Tool Components	2
Steps for using the SIS Web Tool.....	6

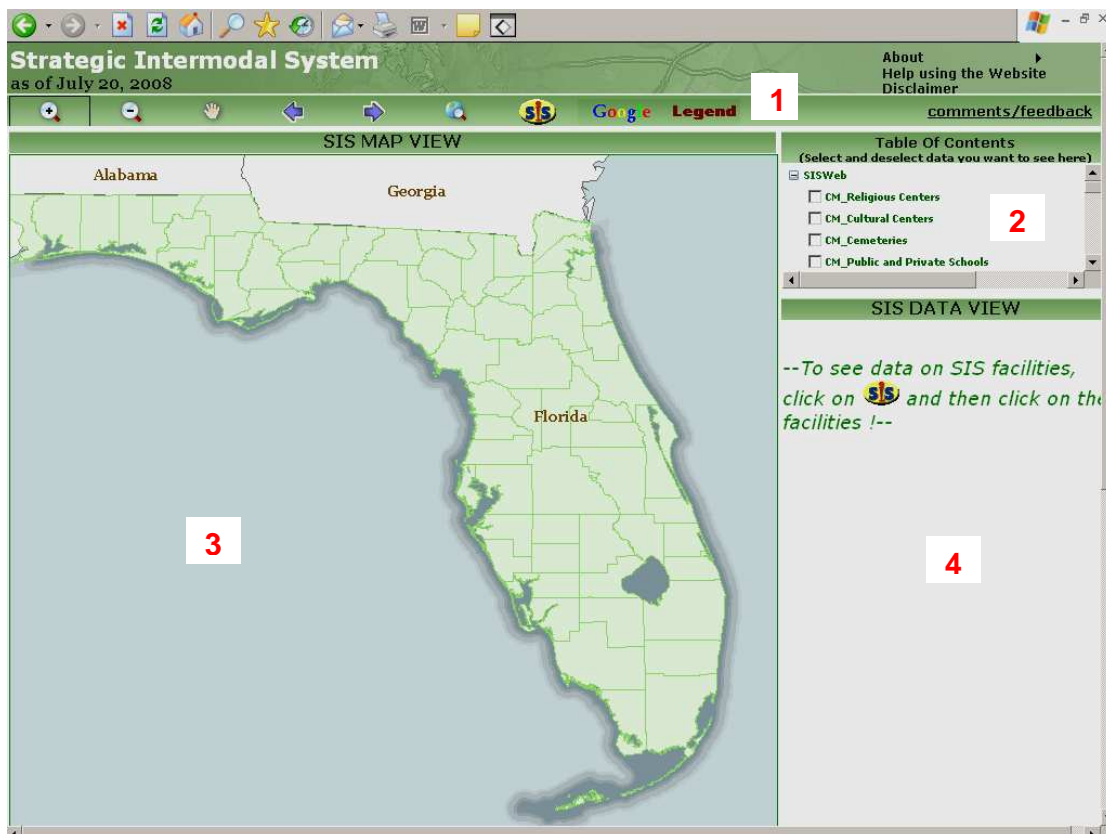
Introduction

This interactive web based tool is designed for viewing facility data as part of SIS Designation. This document provides an overview of the components of the web tool and then lists steps for using the web tool.

Web Tool Components

The Web Tool has the following four major components.

1. Web Toolbar
2. Table of Contents
3. SIS Map View and Google Map Interface
4. SIS Data View



1. Web Toolbar



The Web Toolbar contains tools for map navigation, map interaction and a link that displays the map legend. These tools are the primary means by which the user can explore the designation data. There are **six primary map navigation tools**: Zoom-in, Zoom-out, Pan, Zoom to Previous Extent, Zoom to Next Extent, and Full Extent. There are also **two special function tools**: the SIS tool and the Google tool. The **SIS tool** can be used to click on the map interface to explore the SIS database. The SIS tool acts in conjunction with the map interface and the SIS Data View. Clicking on the SIS facilities in the Map View will display corresponding data from the SIS Data View. The other special function tool, the **Google tool**, is a free add-on feature. The Google tool acts in conjunction with the Map View. When the user clicks on the Google tool, a pop-up window displays a map with data drawn from the Google servers. The pop-up window is set to draw at the same zoom level and zoom extent as the SIS Map View Interface. The Web Toolbar also contains a link to the SIS Web Tool legend.

2. Table of Contents

The Table of Contents displays the list of all GIS Data layers that are currently available in the SIS Database. The user can turn any GIS layer on or off by checking or un-checking the layer in the Table of Contents. By default the Community (CM) and Environmental (ENV) layers are un-checked. These can be displayed by checking the layers in the Table of Contents. It should be noted that the Table of Contents is map zoom-level sensitive which means when the area displayed in the Map View gets larger, fewer details are displayed from the Table of Contents. As the user zooms into the map with the navigation tools, more data become visible. The explanation for all maps symbols is located in the map legend on the Web Toolbar.



3. SIS Map View and Google Map Interface

The SIS Map View is the primary GIS map display interface. The Map View displays all the data listed in the Table of Contents. As described above in the **Web Toolbar** and **Table of Contents** sections, the map displays data based on the zoom-level. As the user zooms into the map, more data are displayed.

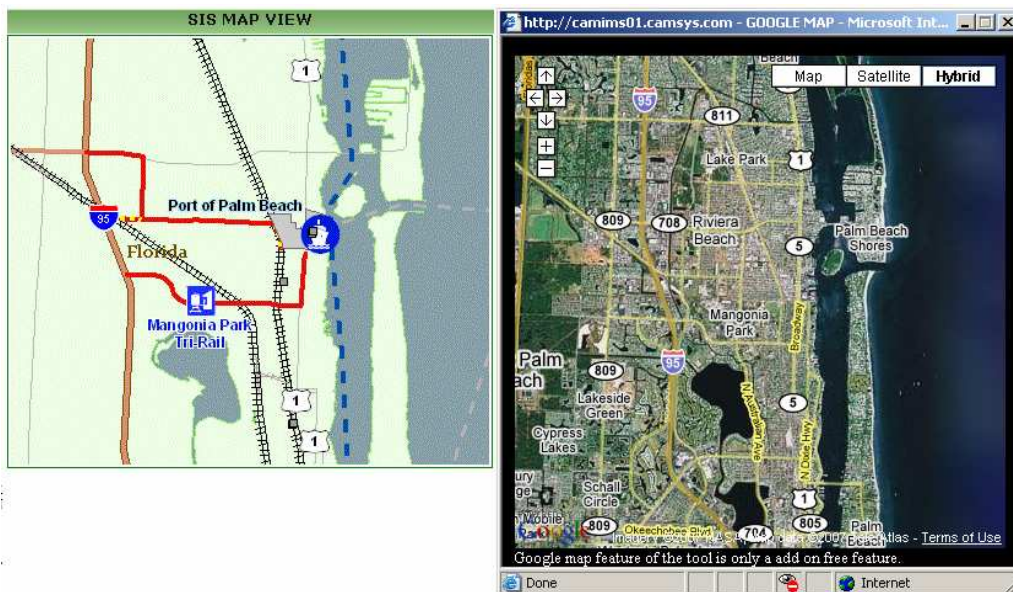


Zoomed Out - Less Details



Zoomed In - More Details

The SIS Map View is closely integrated with the Google Map View. As explained above, when the user activates the Google map tool from the toolbar, a pop-up window displays a map with data drawn from the Google servers. The pop-up window is set to draw at the same zoom level and zoom extent as the SIS Map View Interface. The Google Map View has the same standard map features as any Google Map including the ability to see the 'Map', 'Satellite' or 'Hybrid' views.




4. SIS Data View

The SIS Data View serves to display the SIS data. When the user clicks on a SIS facility inside the Map Interface, the data is drawn from the SIS database and shown in the SIS Data View. The SIS Data View consists of the logical tables of data that are organized into six sections:

- The **first section** identifies the name and type of facility along with the prior and current designation.
- The **second section** is the facility Activity Data which identifies the level of activity for each mode based on the most recent data available at the time of review. This data is compared to minimum size thresholds identified for each facility.
- The **third section** is the Economic Connectivity Data which provides the outcome of the economic connectivity analysis. This analysis is based on criteria developed to address the need for connections to emerging economic regions.
- The **fourth section** is the Planned Facility Evaluation. If the named facility is identified as planned, the three criteria listed in this section must be evaluated.
- The **fifth section** is the evaluation of the SIS Designation Criteria. This evaluation uses the data from the second, third, and fourth sections to determine the designation outcome for each facility evaluated.
- The **sixth section** is the Rationale for Designation. This rationale, based on the above data and evaluation, provides a brief description of the final outcome for designation.

SIS DATA VIEW				
Name	JACKSONVILLE INTL			
Facility	Airport			
Prior Designation	SIS	2002		
Current Designation	SIS	2006		
Airport Activity Data				
	Value	% of US Total	Source	Year
Enplaned and Deplaned Air Cargo Tonnage	86,832	0.26	ACI	2006
Passenger Enplanements at This Facility	2,971,953	0.4	FAA	2006
Economic Connectivity Data				
	Value	Source	Year	
Tourist Establishments (within 50 mile radius)	55	INFOUSA	2005	
High-Technology Businesses (within 50 mile radius)	10	INFOUSA	2005	
Four year Colleges and Universities (within 50 mile radius)	4	FL-DIVCOL	2006	
In or adjacent to county with top 25% growth rate	Yes	FL-OEDR	2005	
Planned Facility Evaluation				
Projected to meet designation criteria within three years of opening	Not Required			
Evidence of partner consensus	Not Required			
Financially feasible	Not Required			
SIS Designation Criteria				
Meets Minimum Size Criteria	YES (SIS)			
Meets Distance Criterion	Not Required			
Meets Economic Connectivity Criteria	Not Required			
Meets Community & Environment Criteria	Yes			
Meets Planned Facilities Criteria	Not Required			
Rationale For Designation				
Meets SIS minimum size criteria for passenger and cargo				

Steps for using the SIS Web Tool

- 1) Navigate in the map interface to the facility of interest using the Map Navigation Tools in the Toolbar
- 2) Activate SIS tool by clicking on the  icon in the toolbar
- 3) On the SIS Map View Interface, click on the facility of interest with the SIS Tool, this displays the SIS Data in the Data View.
- 4) Activate the Google Tool if you wish to see a more detailed map from Google.
- 5) If you have any comments or questions, forward them to the SIS Project Manager via the contact information on the homepage.